

Line pressure regulator HD250

- Inlet pressure max 440 bar and operating pressures up to 250 bar



Description:

The line pressure regulator HD250 is a single-stage pressure regulator for high pressure applications (in- and outlet).

The HD250 is designed as a piston pressure-regulator and reduces the pressure of compressed gases or liquids to a maximum outlet pressure of 250 bar.

Application area:

- This pressure regulator is designed for use with high inlet and outlet pressures.
- High pressure technology
- Pilot pressure regulator e.g. in controlled systems in connection with Dome pressure regulators.
- The high-grade steel construction with gaskets made of Viton compound permits the use of aggressive media with HD 250.

Technical details:

Body:	brass, nickel and matt chrome plated or stainless steel
Seat:	PCTFE
Gaskets:	viton / NBR
Max. inlet pressure:	440 bar
Outlet pressure range:	5 - 250 bar 1 - 100 bar 1 50 bar
Operating temp.:	-20°C to +70°C
Dimensions:	131 x Ø53 (mm)
Weight:	865g
Threads:	in and outlet

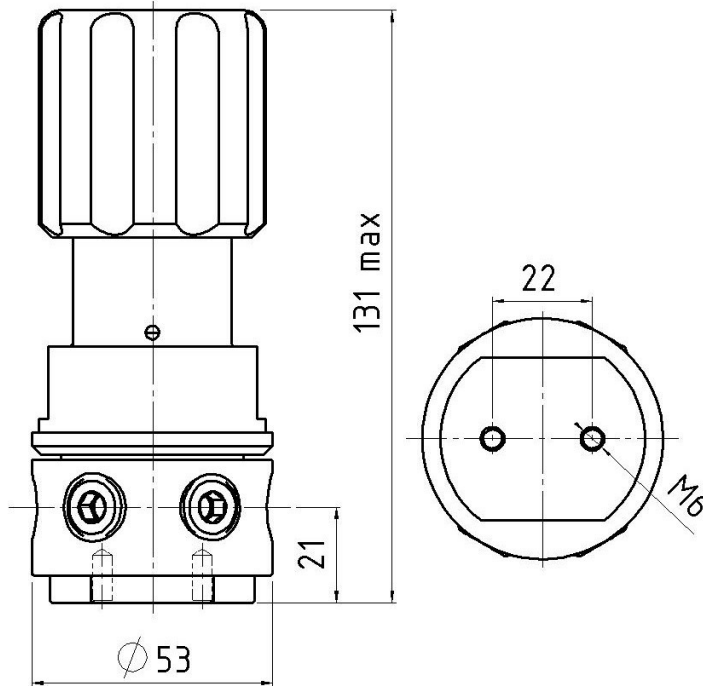
Hornung Quality standard

The company Hornung is certified to **DIN EN ISO 9001 and ISO 14001:2009**. All single parts are manufactured, assembled and tested by in-house production. The finished parts are therefore under all criteria of German quality control with 100% final inspection.

Hornung GmbH
Rathenaustraße 55, 63263 Neu-Isenburg

Phone: +49 6102 7883-70
Fax: +49 6102 7883-40

www.hornung.org
info@hornung.org



Accessories:

See total catalogue segment

- 5. Diaphragm shut-off and metering valves
- 7. Gauges, screws compression fittings and other accessories

Ordering information:

Material:

- 1 = brass, nickel and matt chrome plated
- 2 = stainless steel electropolished

Gaskets:

- 1 = NBR
- 2 = viton

Outlet pressure ranges:

- 1 = 5 – 250 bar
- 2 = 1 – 100 bar
- 3 = 1 – 50 bar

Gauge:

- 1 = without gauges
- 2 = outlet pressure gauge
- 3 = in- and outlet pressure gauges

Outlet option:

- 00 = NPT 1/4" f
- 03 = compression fitting 3mm
- 06 = compression fitting 6mm
- 08 = compression fitting 8mm
- 10 = compression fitting 10mm
- 12 = compression fitting 12mm

Order example:

Regulator type	
42	HD250

42-	1	1	2	3	06	Medium
Type	Mat.	Gaskets	Press.	Gauge	Option	Medium

Accessories:

See total catalogue segment

- 7. Gauges, screws compression fittings and other accessories